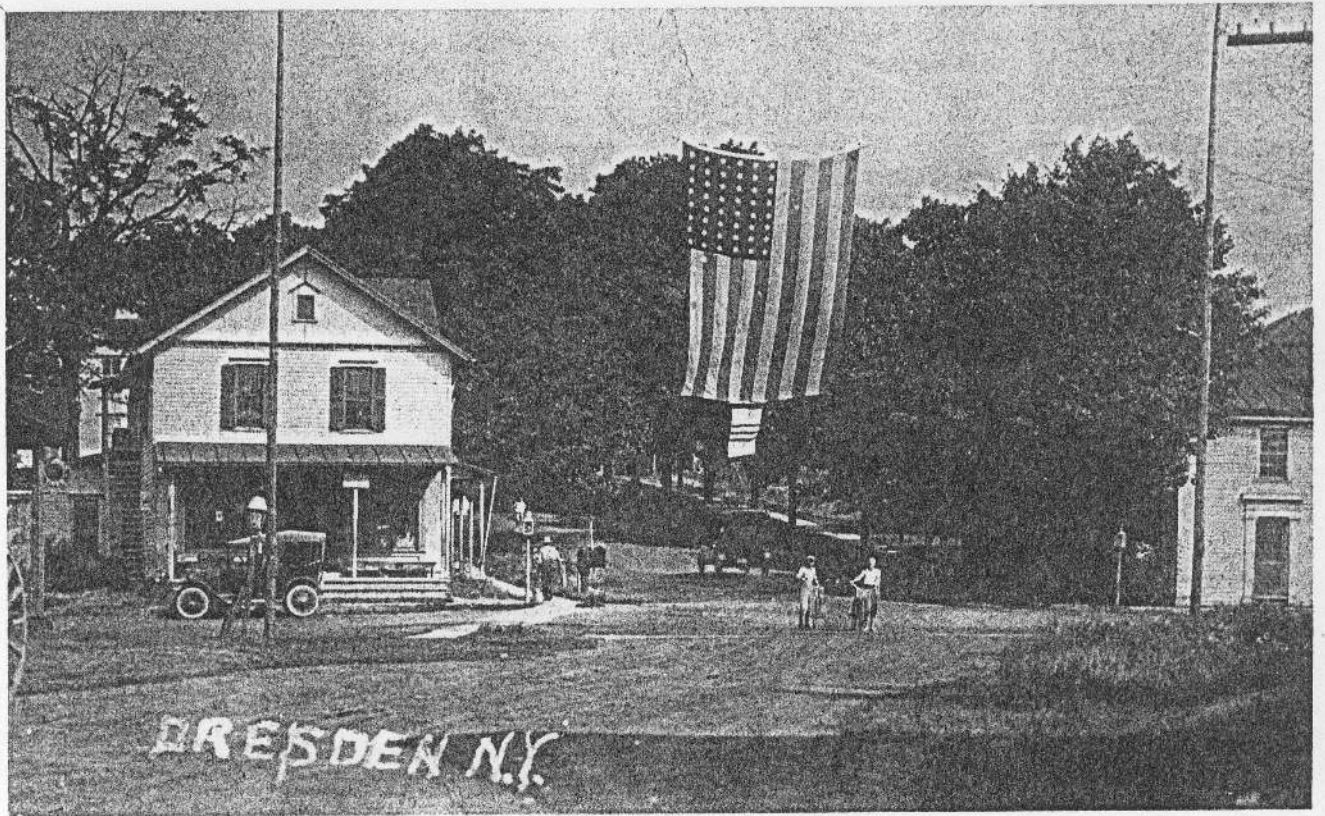
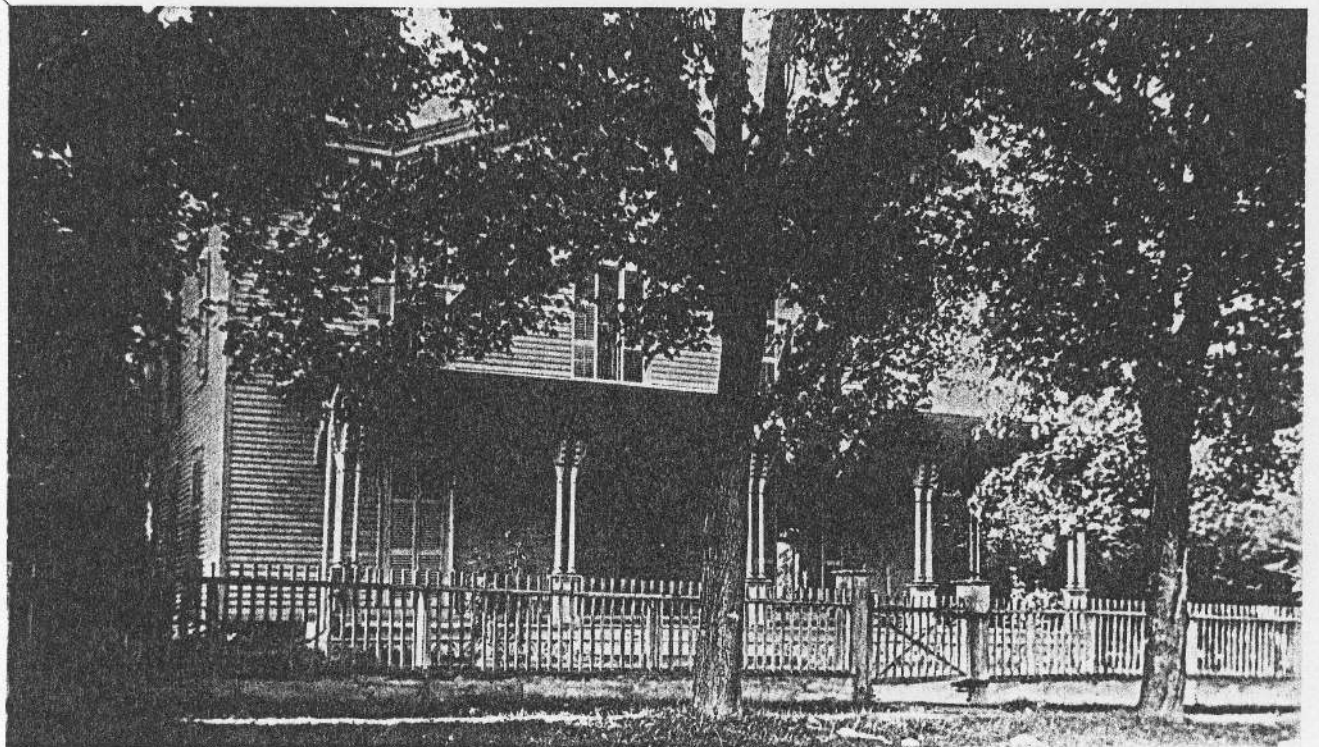


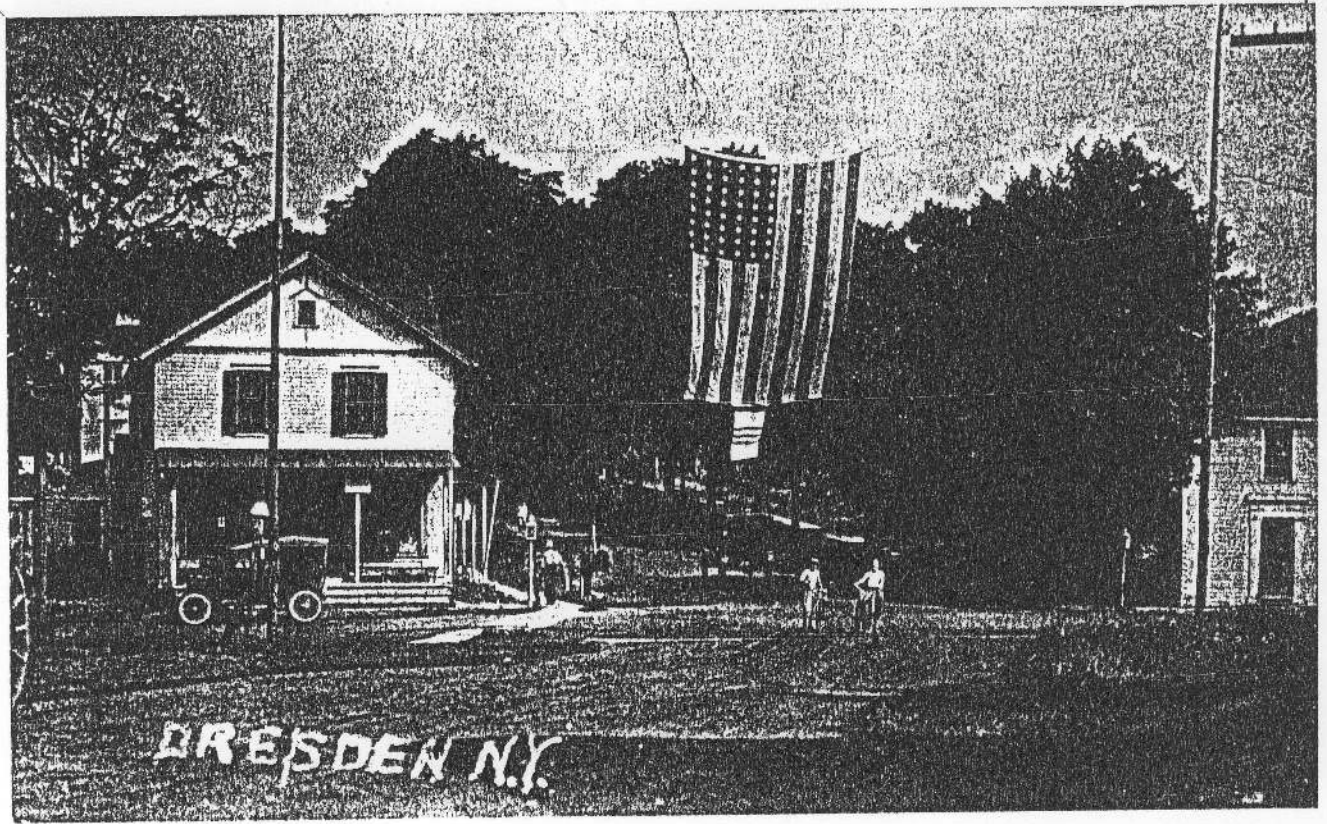
The Leach house (above) on Route 14 in Torrey was built in 1836, a very simple Greek Revival house with an exceptionally intricate herringbone design in its cobblestone facade. The Greek Revival house (below) on the corner of Seneca and Charles Streets in Dresden was once the southwest portion of the Dresden Hotel, an enormous and then-symmetrical building that served as the village's social center.



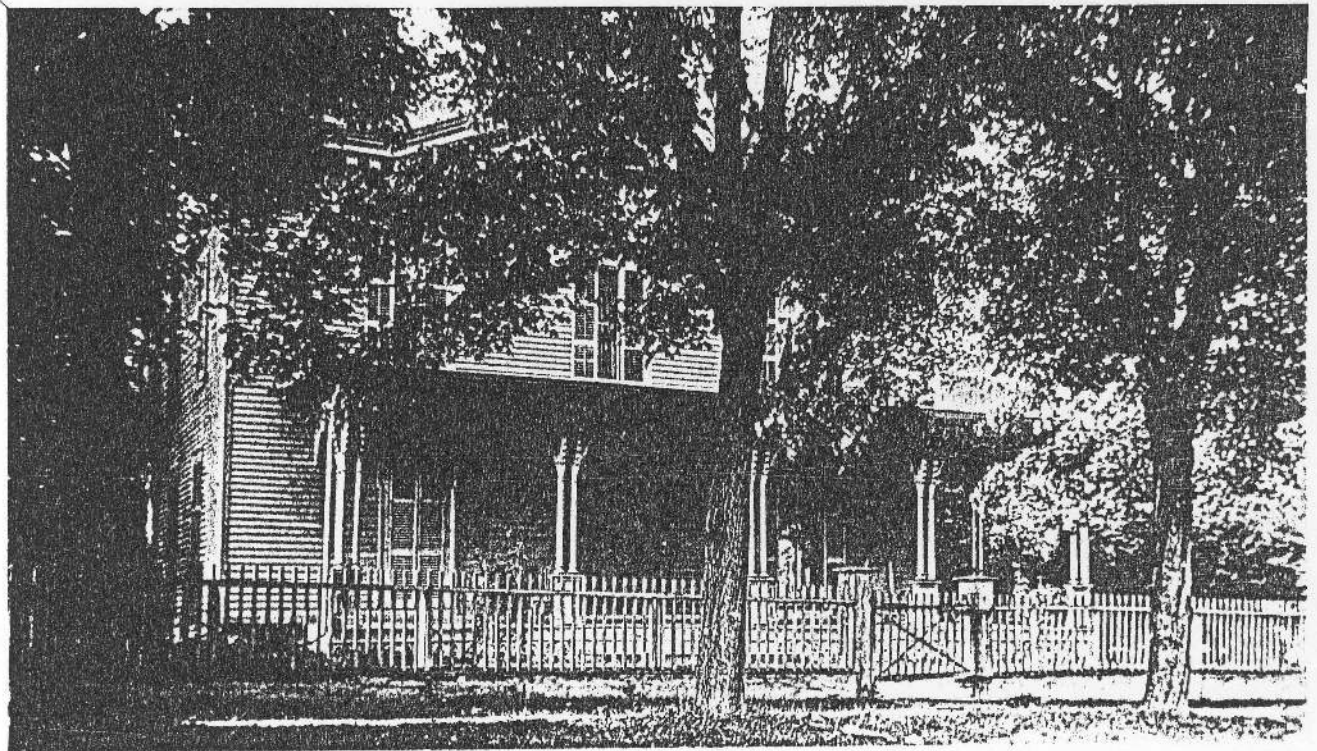
Early Picture of Dresden 4-Corner
Seneca & Charles St.



Willis House -
Ray-Norton - Seneca St. Dresden N.Y.



Early Picture of Dresden 4. corner
Seneca & Charles St.



Willis House -
Ray - Norton - Seneca St. Dresden N.Y.